



Construction Products Group

WHOLE WALL SYSTEMS

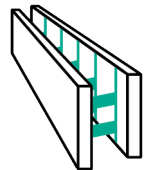
What is a Tremco CPG whole wall system?

A whole wall system includes all building envelope components from the structural, through the air and weather barriers, joints and sealants, all the way out to the continuous insulation and exterior finish.

Whatever your project’s underlying structural and desired final aesthetic — from the look of brick, stucco and natural stones, to metal, wood and almost limitless color and texture combinations — you can easily design and specify everything as a single package with a Tremco CPG whole wall system.

This unique approach also helps ensure an air- and watertight building envelope, improved energy efficiency, and reduced construction time and labor costs caused by compatibility issues on the jobsite.

Whole wall systems help any project meet stringent performance requirements like fire resistance, energy conservation, disaster resilience and sound attenuation.



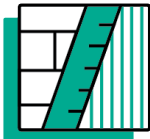
From the structural

Build better, stronger exterior walls with durable, insulated concrete forms and pre-engineered window/door bucking, sill plates and parapet caps.



Throughout the building envelope

Sealants, air barriers, waterproofing and transitions work together to create a comprehensive building envelope.



To the façade, CI & cladding

CI systems work together with a complete palette of colors, textures and finishes to create any aesthetic.



Under one warranty

Tremco CPG whole wall systems are backed by an enhanced, water-tight, whole-building enclosure warranty covering materials and labor for system component performance.



Why are Whole Wall Systems a better way to build?

There are many building enclosure product manufacturers to choose from, but Tremco CPG offers the most comprehensive selection of products to build whole wall systems, which provide:



Faster construction time

Nudura ICFs, Tremco sealants and Dryvit finishes work together to streamline and speed construction processes vs. traditional building methods.



Better insulated

Tremco CPG whole wall systems are designed for more efficient building construction and operation, and exceed strict energy codes.



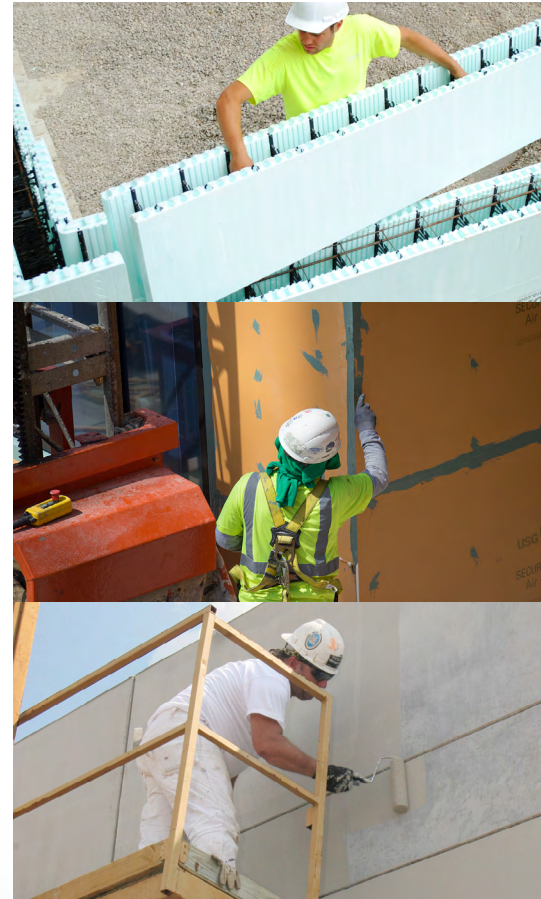
Any aesthetic you can envision

A wide range of colors and finishes like brick, stone, wood, metals, stucco and more provide maximum flexibility in your building's aesthetic.



Enhanced strength and resiliency

Our comprehensive whole wall systems are built for maximum durability, many with service lives far surpassing that of competing options.



Ready to learn more or get started? →

Nudura

nudura.com/company/team
705.726.9499

Dryvit/Tremco

tremcosealants.com/find-your-sales-rep
800.321.7906



"It allowed us to see the whole system, and we began to understand the value that that brought — and for us, that was a game changer."

Jennifer Nichols,
Aspire Carolinas Foundation, Inc.
← Aspire Trade High School

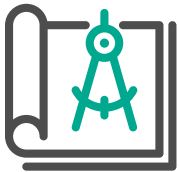
**Nudura ICF | Prebuck Framing
Tremco Sealants | Dryvit Finishes**

— Top 5 Advantages for Architects & Design Professionals —



1) Make your job (and life) easier

Working with clients to develop a beautiful and functional space that meets project needs is challenging enough. With Tremco CPG, you can leave many details of creating a wall system that provides protection against air and water leakage and ensures thermal performance to us. *Literally*. With all the details and testing already ironed-out by a single provider, you can specify your wall in a snap — and rest easy knowing it will perform for the long term.



2) Lighten your load, technically speaking

When you choose a Tremco CPG whole wall system, we provide you with the project specific details, mock-up assistance, testing and advice needed to help make sure every component functions as intended. You can also call on our experts for custom details and technical guidance to help ensure your design will perform as intended. Our tested, proven systems meet or exceed building code requirements.



3) Realize your vision through colors, textures & finishes

Whether you're looking to create a contemporary, historical or completely unique look for your next project, we have the aesthetic options to help you realize your vision. Your whole wall system can transition seamlessly between any combination of our standard textures, colors, specialty finishes, and dozens of other techniques and options.



4) Meet any building requirement or code

Tremco CPG whole wall systems are designed to meet even the most stringent owner's requirement or building code — whether it be energy concerns/requirements like LEED rating, NFPA 285, STC rating, strict R-values, product UL listings or specific product performance demands. Get proven whole wall system solutions to meet any and all project requirements.



5) Reduce your risk: no compatibility issues or finger-pointing

From the cladding, to the CI, to the air barrier, waterproofing, sealants, coatings and even window flashings and gaskets — if any product in a Tremco CPG whole wall system is defective, the material, labor and repair is on us. All components of our systems are covered together under a single warranty, so there's never any finger-pointing between manufacturers.

Tremco CPG Inc. | 3735 Green Road | Beacwood, OH 44122 | 800.556.7752 | tremcocpg.com

Tremco Construction Products Group (CPG) brings together Tremco CPG Inc. and its Dryvit and Nudura brands; Willseal; Prebuck LLC; Tremco Barrier Solutions, Inc.; Weatherproofing Technologies, Inc. and its Pure Air Control Services and Canam Building Envelope Specialists offerings; and Weatherproofing Technologies Canada, Inc.