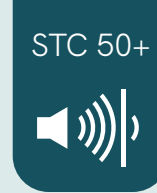


OUTSULATION[®] PLUS MD OVER NUDURA[®] ICF

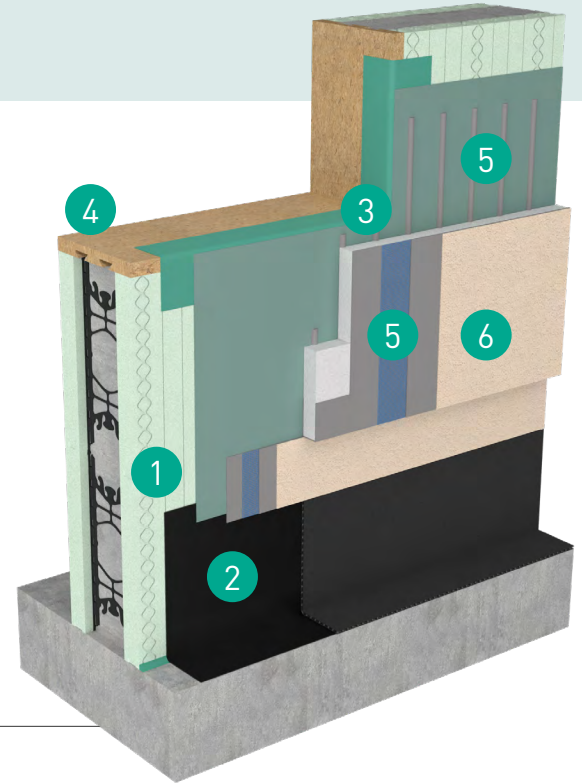


Wall System Overview

A top-of-the-line, industry-unique, whole wall system with maximum resiliency and energy efficiency, and finished with any combination of colors, textures and finishes for a beautiful, durable structure built for the long term.

Beginning with insulated concrete forms (ICFs) from the foundation to the roof line — and incorporating waterproofing, air barriers, moisture drainage and tie-ins at all transitions and penetrations — the system creates a complete, weatherproof, air-tight building envelope.

Tested for compatibility at all connection points, the system carries a single-source warranty in a single document.



Feature	Benefit
ICF Construction	Improves strength and disaster resiliency for safer structures, especially critical in tornado or hurricane-prone areas that require design in accordance with ICC 500
R-value of 31+	Maximizes energy efficiency for reduced heating and cooling costs and faster ROI for building owners
STC 50+ (Rw51)**	Minimizes sound transmission for quieter environments such as hotels, hospitals, homes and schools
Compatibility-Tested	Reduces cost and labor by reducing extra steps, components and subcontractors required for the project
NFPA 285 Compliant	Limits potential spread of fire to help ensure buildings and their occupants are safe
Incorporated Drainage	Allows for drainage of incidental moisture to protect structure against water damage
Integrated Design	Speeds construction times to keep projects on schedule

Wall System Assembly

1	Nudura Insulated Concrete Forms (ICF) Structural Components
2	Tremco Below-Grade Waterproofing Tied-in to Air Barriers at Grade
3	Dryvit/Tremco Air Barriers Tied-in to All Transitions at Windows, Penetrations and at Roof Parapets
4	Prebuck Pre-Engineered Window Bucking and Parapet Components
5	Dryvit Outsulation Plus Moisture Drainage (MD) System
6	Dryvit Texture, Color or Specialty Finish (Tuscan Glaze™ in #800 Metropolitan shown)



Construction Products Group

**STC 50 (Rw51) rating based on minimum 6" (152 mm) Nudura form and concrete core thickness or larger installed with code compliant finishes mounted both side of wall assembly in accordance with Nudura Installation procedure

OUTSULATION[®] PLUS MD OVER NUDURA[®] ICF

TESTING CATEGORY	PERFORMANCE TESTS	WHY IT MATTERS
Air and Water Resistance	<ul style="list-style-type: none">Water Resistance & PenetrationAir LeakageNail SealabilityWeathering/UV Exposure	<ul style="list-style-type: none">Seamlessly protects sheathing or substrate from incidental moisture and eliminates air infiltrationProtects structure from a wide range of harsh and challenging weather conditions
Durability	<ul style="list-style-type: none">Abrasion ResistanceImpact ResistanceFreeze-ThawWater & Mildew ResistanceDrainage Efficiency	<ul style="list-style-type: none">Allows drainage of incidental moisture on the wall for damage protectionAvailable with hydrophobic (HDP) or proven mildew resistance (PMR) technologiesHas exceptional elongation and crack-bridging waterproofing characteristics below grade, guarding against movement that creates openings
Structural Strength	<ul style="list-style-type: none">Impact ResistanceTransverse Wind Load	<ul style="list-style-type: none">Resists and can be warranted against punctures (with HDCI finish system)Protects against stress and potential debris impact from high windsMaintains the structural integrity of the systemEvaluated for strong tensile adhesion between all system components
Fire Performance	<ul style="list-style-type: none">4-Hour Fire Resistance (UL-263)NFPA 268 CompliantNFPA 285 Compliant	<ul style="list-style-type: none">6-inch Nudura core ICF & greater provides minimum 4 hour fire resistance/UL Listing (U930) for both exterior load bearing walls and interior walls between suitesDryvit's non-combustible, ignition resistant finish protects exterior of wall assembly against lateral (suite-to-suite) and vertical (floor-to-floor) flame propagation

Ready to Get Started with a Whole Wall System?

If you're interested in making your next project easier with a code-compliant, ready-to-specify wall system, contact your local Tremco, Nudura or Dryvit representative at →

Nudura nudura.com/company/team
866.468.6299

Dryvit/Tremco tremcosealants.com/find-your-sales-rep
800.321.7906

Tremco CPG Inc. | 3735 Green Road | Beacwood, OH 44122 | 800.556.7752 | tremcocpg.com

Tremco Construction Products Group (CPG) brings together Tremco CPG Inc. and its Dryvit and Nudura brands; Willseal; Prebuck LLC; Tremco Barrier Solutions, Inc.; Weatherproofing Technologies, Inc. and its Pure Air Control Services and Canam Building Envelope Specialists offerings; and Weatherproofing Technologies Canada, Inc.



Use of the ® symbol indicates registration with the US Patent & Trademark Office and the Canadian Intellectual Property Office.